

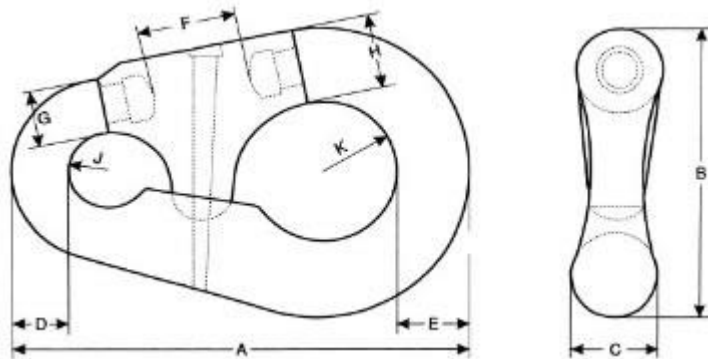
Property of Saxton Marine

Detachable Anchor Pear- Shaped Link

The pear shaped link is used to join the swivel end of the chain cable to the anchor shackle.

Because of its smooth profile, the pear shaped link can advantageously replace the Kenter anchor link (DT 103). Its lightness makes it very easy to handle. The position of the closing system and its simplicity makes it easier to use where larger chain diameters are concerned.

Please note that dimensions and weights are nominal and small variations are reserved.



| DN mm | NS inches | A mm | B mm | C mm | D mm | E mm | F mm | G mm | H mm | J mm | K mm | Kg |
|----------|---------------|---------|---------|---------|---------|---------|---------|-----------|-----------|---------|---------|-----|
| 19-24 | 3/4 15/16 | 194 | 132 | 38 | 24 | 32 | 57 | 24 | 35 | 17 | 31 | 3 |
| 25-30 | 1 1 3/16 | 238 | 167 | 46 | 30 | 38 | 66 | 33 | 45 | 19 | 35 | 6.5 |
| 32-40 | 1 1/4 1 9/16 | 298 | 206 | 59 | 40 | 48 | 83 | 40 x 45 | 57 | 26 | 43 | 13 |
| 42-51 | 1 5/8 2 | 378 | 260 | 76 | 51 | 64 | 100 | 59 x 61 | 74 | 32 | 53 | 27 |
| 52-60 | 2 1/16 2 3/8 | 454 | 313 | 92 | 60 | 76 | 121 | 73 x 62 | 88 | 38 | 65 | 49 |
| 62-79 | 2 7/16 3 1/8 | 562 | 376 | 117 | 79 | 95 | 149 | 79 x 86 | 111 | 48 | 76 | 95 |
| 81-92 | 3 3/16 3 5/8 | 654 | 419 | 133 | 92 | 124 | 149 | 102 x 111 | 130 x 134 | 54 | 80 | 150 |
| 94-95 | 3 11/16 3 3/4 | 692 | 435 | 146 | 98 | 130 | 159 | 124 x 137 | 142 | 57 | 83 | 236 |
| 97-102 | 3 13/16 4 | 889 | 572 | 191 | 121 | 165 | 191 | 130 | 181 | 73 | 108 | 386 |
| 103-111 | 4 1/16 4 3/8 | 940 | 610 | 203 | 127 | 175 | 203 | 146 x 156 | 194 | 76 | 111 | 420 |

Property of Saxton Marine

| | | | | | | | | | | | | |
|---------|--|-----|-----|-----|-----|-----|-----|-----------|-----|-----|-----|-----|
| 110-114 | 4 ⁵ /16 4 ¹ / ₂ | 991 | 648 | 216 | 133 | 184 | 216 | 165 x 175 | 204 | 105 | 115 | 460 |
|---------|--|-----|-----|-----|-----|-----|-----|-----------|-----|-----|-----|-----|



Saxton
M A R I N E

E: info@saxtonmarine.co.uk

Tel: +44 (0) 1446 781092