

Property of Saxton Marine

Pedestal & Ships Mooring Rollers

Please note that dimensions and weights are nominal and small variations are reserved. E & OE



The main types of ships rollers are normally cast steel or cast iron and are built with self-lubricating synthetic bearings, providing an excellent long, near maintenance free working life.

The standard deck roller is a warping rollers. These offer the highest wire breaking strain and can be supplied in various models with plates. All come with removable shafts.

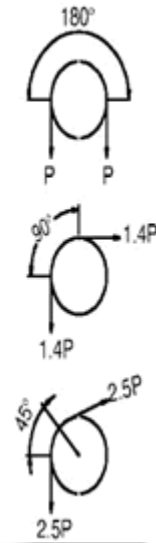
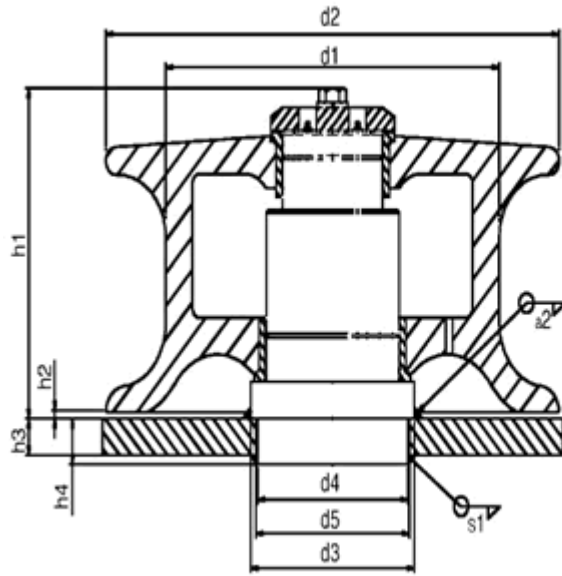
Common combination types include double warping roller with plate, three warping roller with plate.

Ships rollers can be raised from the deck, called pedestal rollers. The base is made of rolled steel plate for strength and long life.

All can be supplied with Certificate: ABS,BV.DNV.LR,CCS, as per your requirements

Saxton
MARINE

Property of Saxton Marine



[UK Suppliers of SEC Mooring Equipmen](#)

Size	d1	d2	d3	d4	d5	h1	h2	h3	h4	s1	s2	P (tonnes)
150	150	240	105	85	90	158	5	25	40	8	6	15.8
200	200	310	130	110	115	190	5	25	40	8	6	19.8
250	250	380	150	130	135	245	6	25	40	8	8	28.5
300	300	440	170	150	155	270	7	35	50	8	8	33.6
350	350	500	190	170	175	294	7	35	50	10	10	44.8
400	400	560	200	180	185	332	7	35	50	12	12	58
450	450	630	225	205	210	341	7	35	50	12	12	64.2
500	500	680	245	225	230	358	7	40	50	15	15	84.3

- 'P' is the breaking load in tonnes on the line which is to be used with the roller fairlead
- Please state if the horn is required

M A R I N E