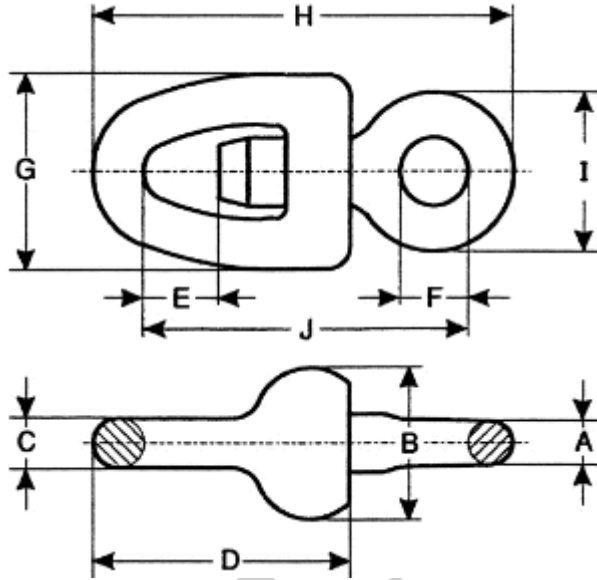


## Property of Saxton Marine

### Swivel

The Swivel is usually fitted between the anchor and the chain cable to prevent the chain cable from twisting and kinking. An anchor shackle with a joining shackle (DT 105) or a Kenter link are needed to complete the assembly. Material of construction is heavy grade (U3) duty forged steel.

Please note that dimensions and weights are nominal and small variations are reserved. E & OE



DN mm	NS Inches	A mm	B mm	C mm	D mm	E mm	F mm	G mm	H mm	I mm	J mm	Kg
14	<sup>9</sup> / <sub>16</sub>	15	48	17	88	23	22	66	136	50	104	1.7
16	<sup>5</sup> / <sub>8</sub>	18	54	19	101	26	25	75	155	58	118	1.9
17.5	<sup>11</sup> / <sub>16</sub>	19	60	21	110	29	27	82	170	63	130	2.1
19	<sup>3</sup> / <sub>4</sub>	23	70	25	129	34	32	96	199	74	152	3
20.5	<sup>13</sup> / <sub>16</sub>	23	70	25	129	34	32	96	199	74	152	3
22	<sup>7</sup> / <sub>8</sub>	24	75	26	139	36	34	103	213	79	163	3.5
24	<sup>15</sup> / <sub>16</sub>	26	82	29	151	40	37	113	233	86	178	5

## Property of Saxton Marine

26	1	29	88	31	164	43	40	122	252	94	192	6
28	1 <sup>1</sup> / <sub>8</sub>	31	95	34	176	46	43	132	272	101	207	7.5
30	1 <sup>3</sup> / <sub>16</sub>	33	102	36	189	50	46	141	291	108	222	9
32	1 <sup>1</sup> / <sub>4</sub>	35	109	38	202	53	49	150	310	115	237	11
34	1 <sup>3</sup> / <sub>8</sub>	37	116	41	214	56	52	160	330	122	252	13.5
36	1 <sup>7</sup> / <sub>16</sub>	40	122	43	227	59	55	169	349	130	266	16
38	1 <sup>1</sup> / <sub>2</sub>	42	129	46	239	63	59	179	369	137	281	19
40	1 <sup>9</sup> / <sub>16</sub>	44	136	48	252	66	62	188	388	144	296	22
42	1 <sup>5</sup> / <sub>8</sub>	46	143	50	265	69	65	197	407	151	311	25.5
44	1 <sup>3</sup> / <sub>4</sub>	50	153	54	284	74	69	212	437	162	333	31.5
46	1 <sup>13</sup> / <sub>16</sub>	50	153	54	284	74	69	212	437	162	333	31.5
48	1 <sup>7</sup> / <sub>8</sub>	53	163	58	302	79	74	226	466	173	355	38
50	1 <sup>15</sup> / <sub>16</sub>	56	173	61	321	84	79	240	495	184	377	46
52	2 <sup>1</sup> / <sub>16</sub>	58	180	64	334	87	82	249	514	191	392	52
54	2 <sup>1</sup> / <sub>8</sub>	58	180	64	334	87	82	249	514	191	392	52
56	2 <sup>3</sup> / <sub>16</sub>	62	190	67	353	92	86	263	543	202	414	60.5
58	2 <sup>1</sup> / <sub>4</sub>	64	197	70	365	96	89	273	563	209	429	67.5
60	2 <sup>3</sup> / <sub>8</sub>	68	211	74	391	102	95	291	601	223	459	83
62	2 <sup>7</sup> / <sub>16</sub>	68	211	74	391	102	95	291	601	223	459	83
64	2 <sup>1</sup> / <sub>2</sub>	70	218	77	403	106	99	301	621	230	474	90
66	2 <sup>9</sup> / <sub>16</sub>	73	224	79	416	109	102	310	640	238	488	99
68	2 <sup>11</sup> / <sub>16</sub>	75	231	82	428	112	105	320	660	245	503	108
70	2 <sup>3</sup> / <sub>4</sub>	75	231	82	428	112	105	320	660	245	503	108
73	2 <sup>7</sup> / <sub>8</sub>	80	248	88	460	120	112	343	708	263	540	134
76	3	84	258	91	479	125	117	357	737	274	562	152

## Property of Saxton Marine

78	3 <sup>1</sup> / <sub>16</sub>	86	265	94	491	129	120	367	757	281	577	164
81	3 <sup>3</sup> / <sub>16</sub>	90	279	98	517	135	126	385	795	295	607	185
84	3 <sup>5</sup> / <sub>15</sub>	96	296	104	548	144	134	409	844	313	644	200
87	3 <sup>7</sup> / <sub>16</sub>	96	296	104	548	144	134	409	844	313	644	200
90	3 <sup>1</sup> / <sub>2</sub>	103	320	113	592	155	145	442	912	338	696	266
92	3 <sup>5</sup> / <sub>8</sub>	103	320	113	592	155	145	442	912	338	696	266
95	3 <sup>3</sup> / <sub>4</sub>	108	333	118	617	162	151	461	951	353	725	300
97	3 <sup>13</sup> / <sub>16</sub>	108	333	118	617	162	151	461	951	353	725	300
100	3 <sup>15</sup> / <sub>16</sub>	112	347	122	643	168	157	479	989	367	755	342
102	4	112	347	122	643	168	157	479	989	367	755	342



Saxton  
M A R I N E

E: [info@saxtonmarine.co.uk](mailto:info@saxtonmarine.co.uk)

Tel: +44 (0) 1446 781092